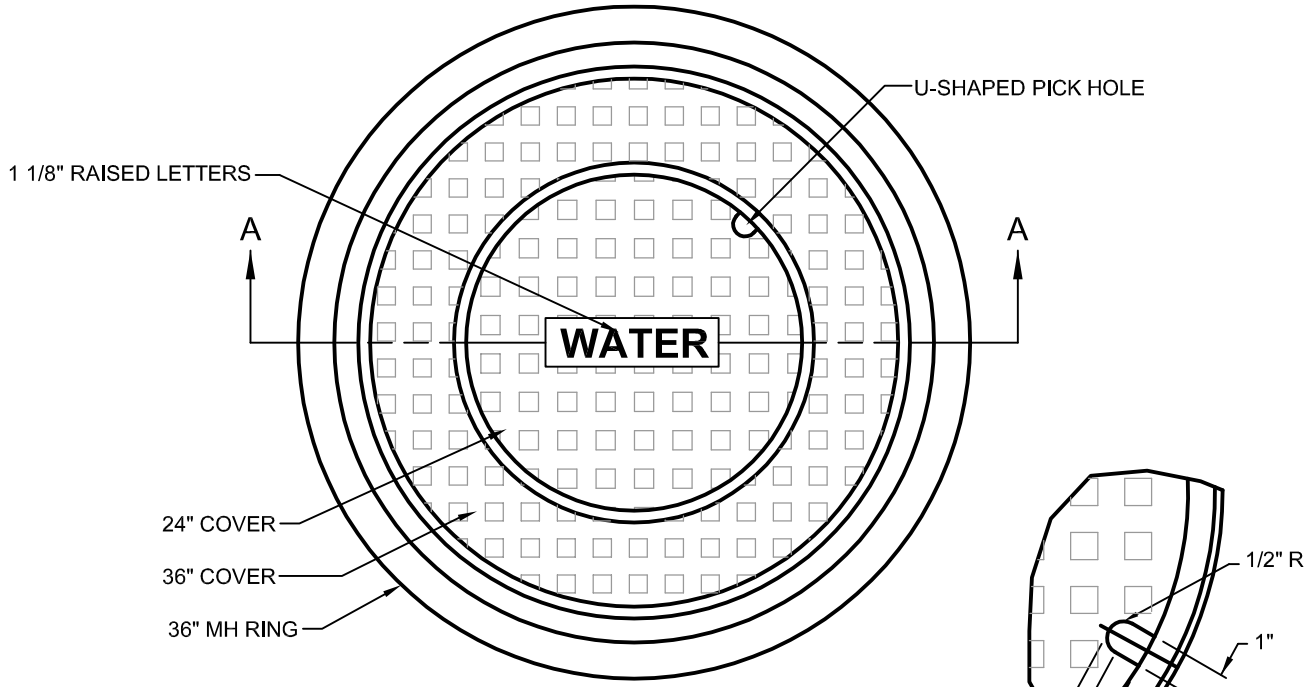
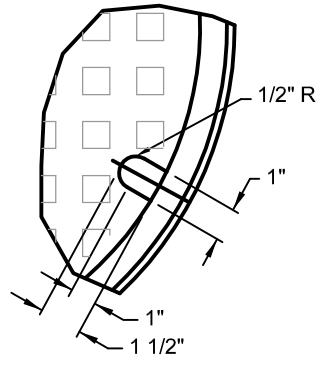


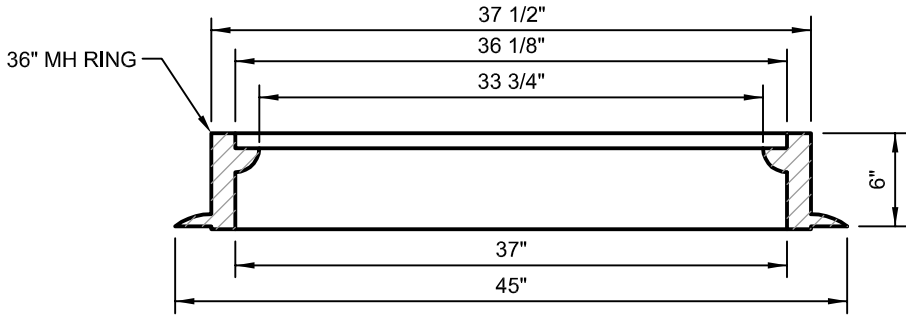
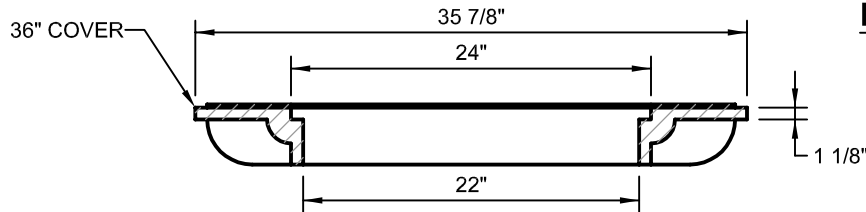
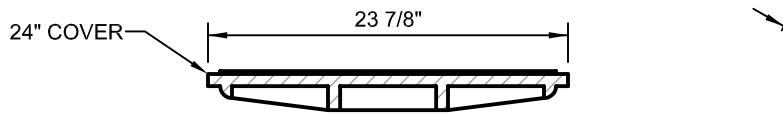
COPYRIGHT © 2016 SOUTHGATE WATER & SANITATION DISTRICTS



PLAN



PICK HOLE



SECTION A-A

NOTES:

1. CASTING SPECIFICATIONS: ASTM A-48 WITH A MINIMUM TENSILE STRENGTH OF 35 KSI (CLASS 35B).
2. ALL CASTINGS TO BE DIPPED IN ASPHALT BASED PAINT (OR APPROVED EQUAL).
3. CASTINGS SHALL BE AS SPECIFIED BELOW OR EQUAL:
 MANUFACTURERS _____ CAT. NO. _____
 CASTINGS, INC. MH7003624CI (SHOWN)

REVISED		 Southgate <small>WATER & SANITATION DISTRICTS</small>	SCALE
BY	DATE		NOT TO SCALE
		36" x 24" DOUBLE RING AND COVER	ISSUE DATE
			FEBRUARY 2016
			SHEET 1 OF 1 DRAWING NO. W-14